

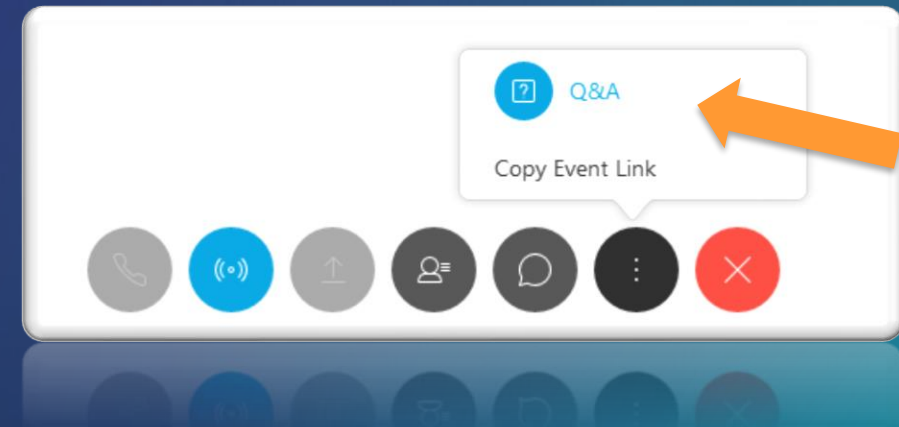
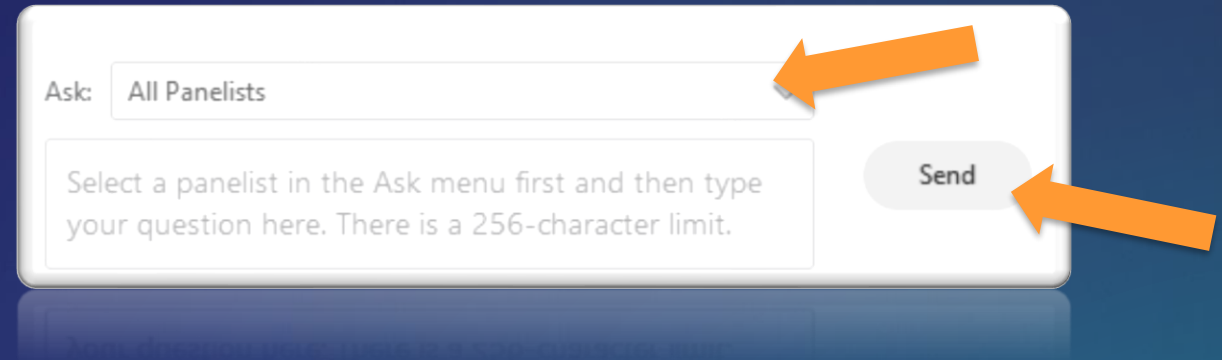


# Surveys and Recordings

- We are recording today
- Expect an email from us with link
- Please share your thoughts on the exit survey

# Open to Questions

- Please use the Q&A panel:
  - Choose *Ask: All Panelists*, type your question and click *Send*
- If you're unable to see the Q&A panel, click the three dots and then the Q&A button on the control dock at the bottom of your screen:



# All Systems Go! ArcGIS Pro 2.8

Mike Gregotski | Team Lead, Technology Adoption

Maggie Samson | Support Analyst, Support Services

June 22, 2021

# Today's Speakers



**Mike Gregotski**  
Team Lead, Technology Adoption



**Maggie Samson**  
Support Analyst, Support Services



# Today's Agenda – All Systems Go!

This webinar is designed to help you understand:

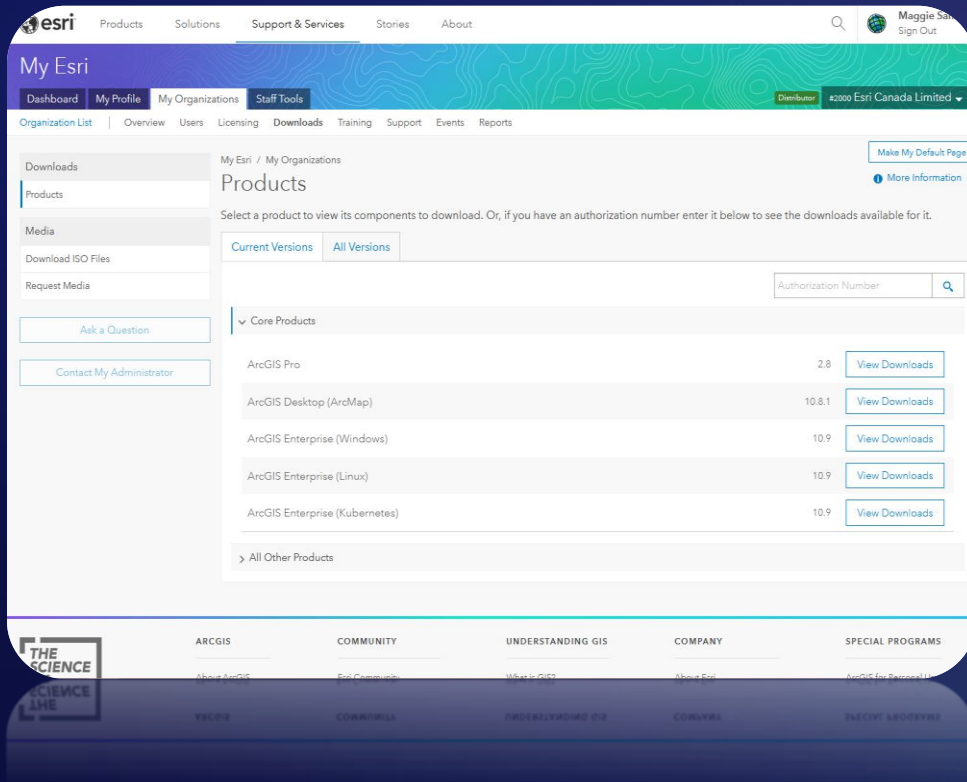
1. Performance and productivity tools to get the most out of ArcGIS Pro 2.8
2. Enhanced methods for analyzing and visualizing your data
3. New tools to help your GIS workflows



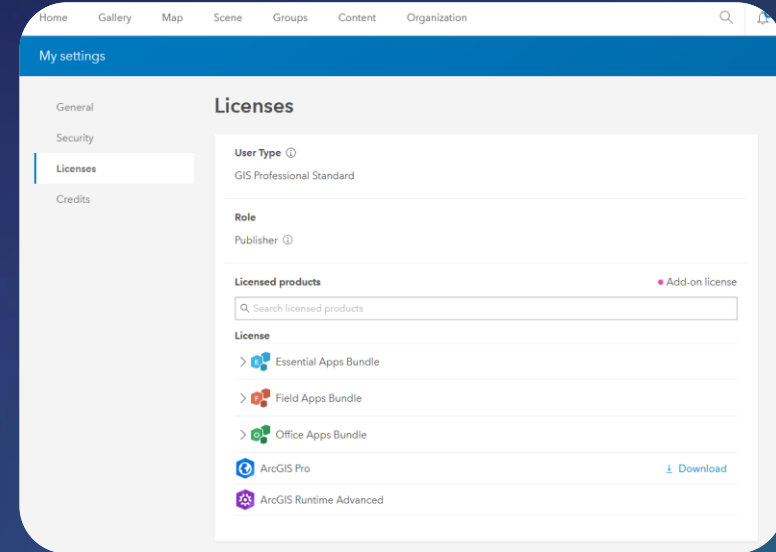
*\*All enhancements available with a Basic license, except where noted*

# Accessing ArcGIS Pro 2.8

## My Esri

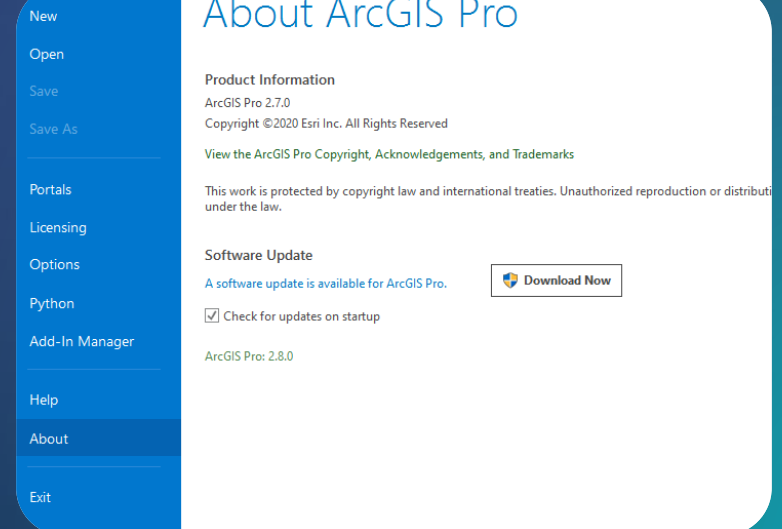


## ArcGIS Online Profile



## ArcGIS Pro

### About ArcGIS Pro



# Performance Improvements

- Major improvements have been made to geoprocessing in ArcGIS Pro 2.8
- Multipart to Singlepart
  - Case: vectorized detailed geology polygons for Canada, some multipart features with 50 million vertices
    - ArcMap without 64-bit BGGP **Out of memory error, will not finish**
    - ArcMap with 64-bit BGGP/ ArcGIS Pro 2.7 ~ **36 hours**
    - ArcGIS Pro 2.8 ~ **2 hours**
- Append with feature service input
  - Case: Append 40,000 points to feature service
    - ArcGIS Pro 2.7 ~ **15 minutes**
    - ArcGIS Pro 2.8 ~ **25 seconds**

## Data Engineering

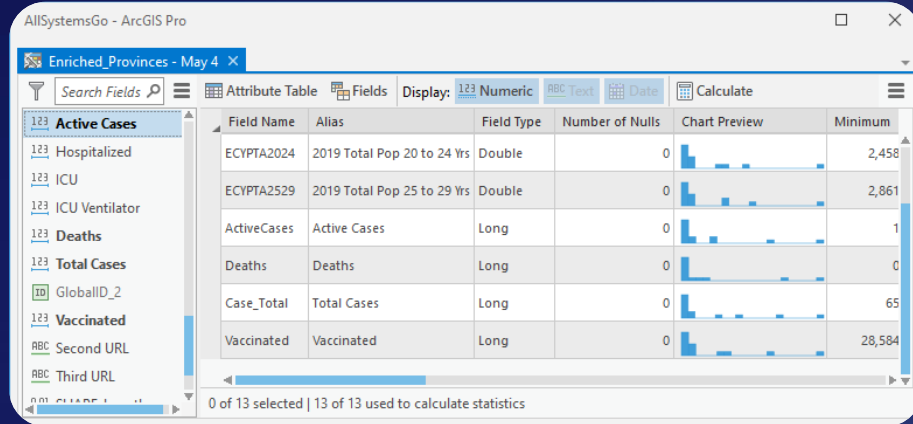
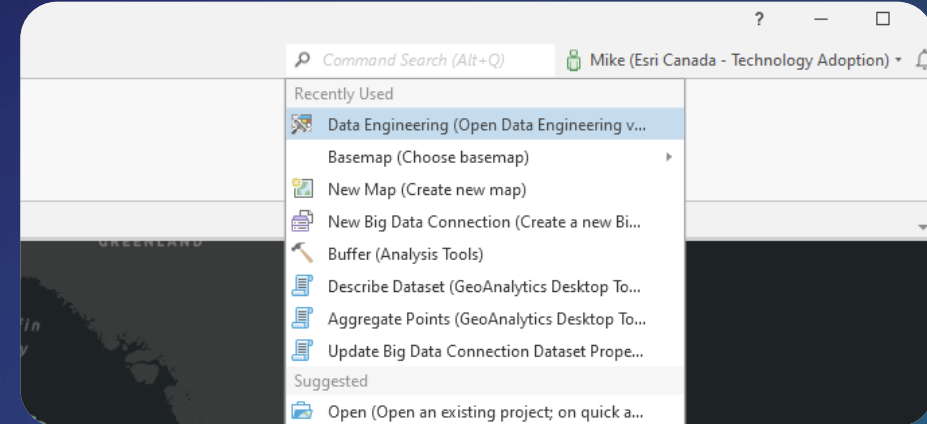


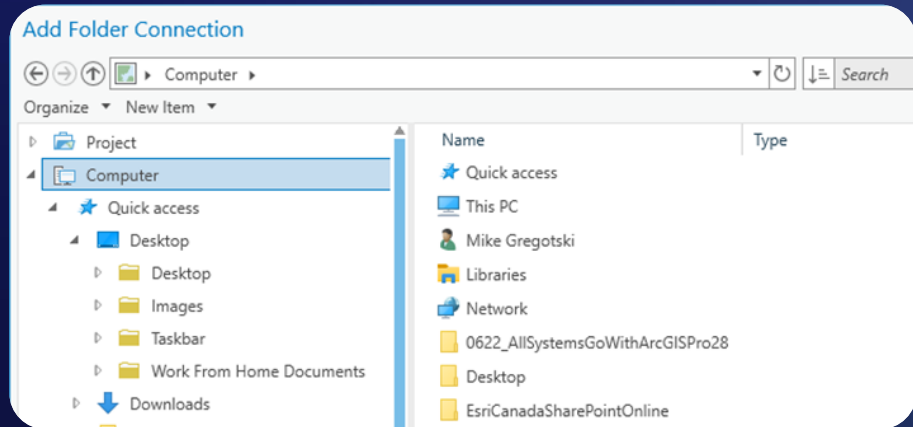
Table with 7 columns: Field Name, Alias, Field Type, Number of Nulls, Chart Preview, and Minimum. The table lists various COVID-19 related fields and their statistics.

Field Name	Alias	Field Type	Number of Nulls	Chart Preview	Minimum
ECYPTA2024	2019 Total Pop 20 to 24 Yrs	Double	0		2,458
ECYPTA2529	2019 Total Pop 25 to 29 Yrs	Double	0		2,861
ActiveCases	Active Cases	Long	0		1
Deaths	Deaths	Long	0		0
Case_Total	Total Cases	Long	0		65
Vaccinated	Vaccinated	Long	0		28,584

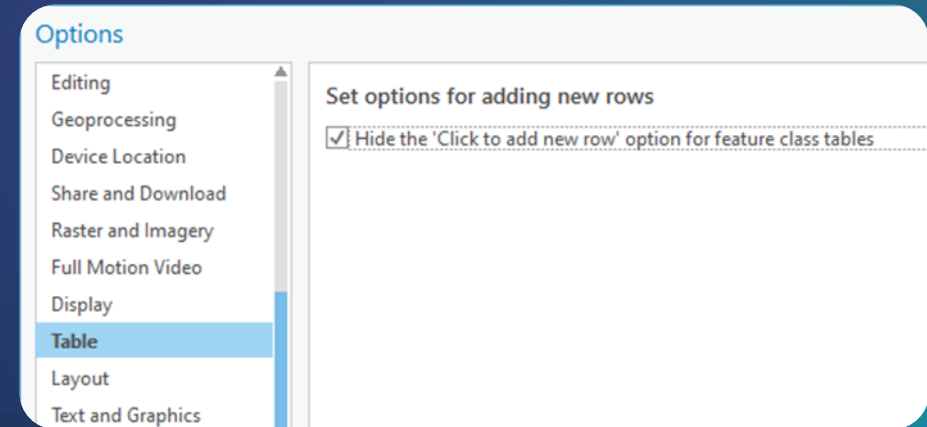
## Command Search



## File Explorer Categories



## Table Improvements



Data source for demo: [resources-covid19canada.hub.arcgis.com](https://resources-covid19canada.hub.arcgis.com)



# ArcPy.Charts Module

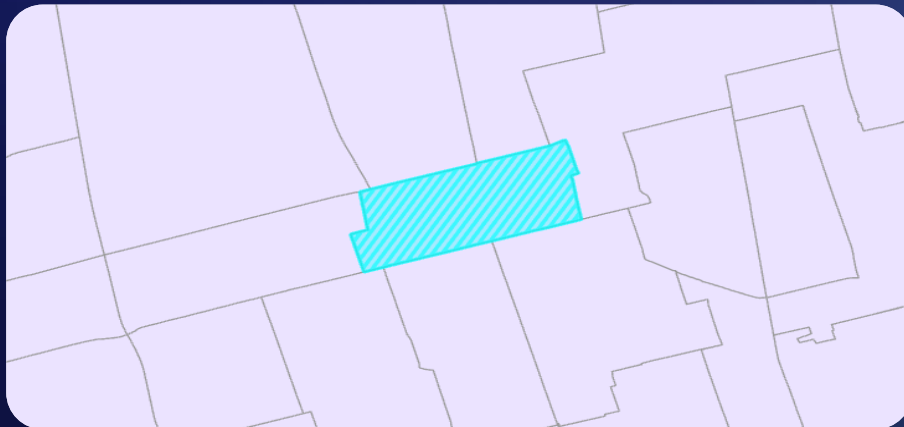
```
In [1]: aprx = arcpy.mp.ArcGISProject('current')
        barSourceLayer = aprx.listMaps()[0].listLayers('Major_Crime_Indicators')[0]

In [7]: bar_chart = arcpy.charts.Bar(x="offence", aggregation="count", xTitle="Type of Occurance",
        yTitle="Number of occurrences in 2020", title="Count of different Crim",
        displaySize=(600, 600), dataSource=barSourceLayer)

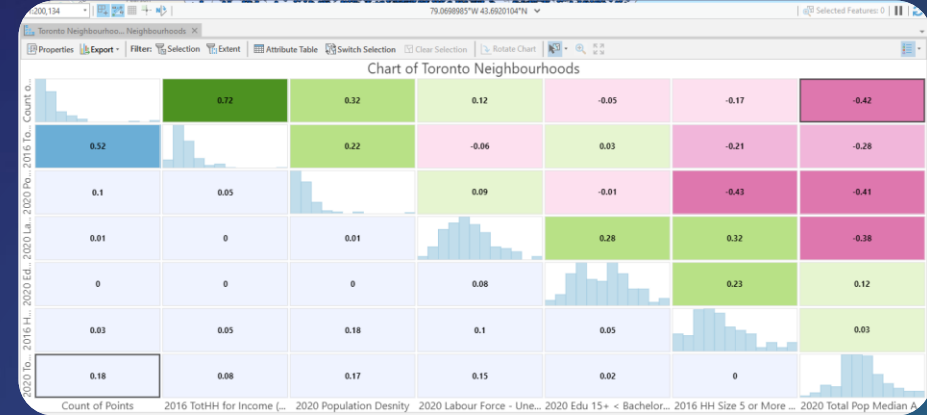
In [8]: bar_chart
Out[8]: Count of different Crime incidents in Toronto, 2020 data
```



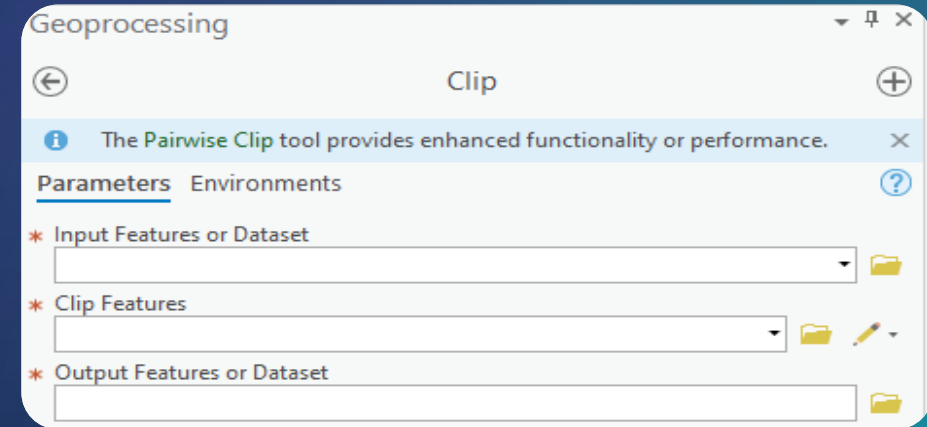
## Polygon Fill Select



# Charts Improvements



## Tool Tip Messaging

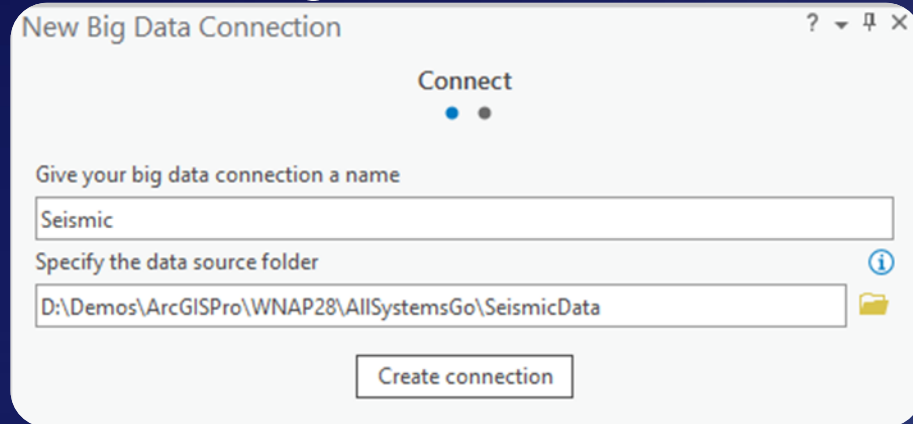


# Review and Questions

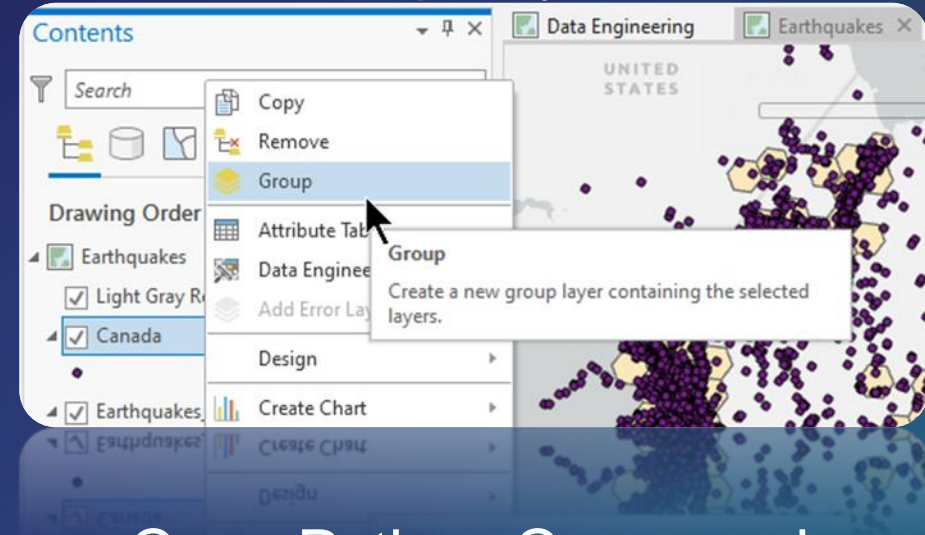
- Data Engineering
- Command Search
- File Explorer Categories
- Table Improvements
- ArcPy.Charts Module
- Charts Improvements
- Polygon Fill Select
- Tool Tip Messaging



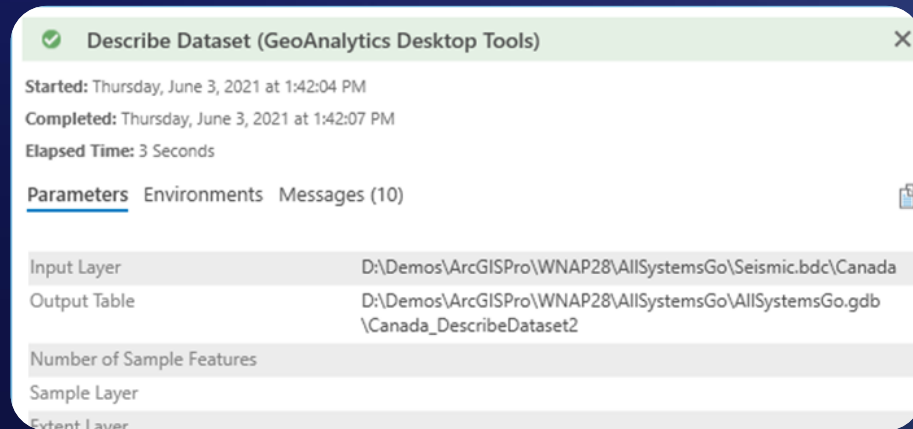
## New Big Data Connection\*



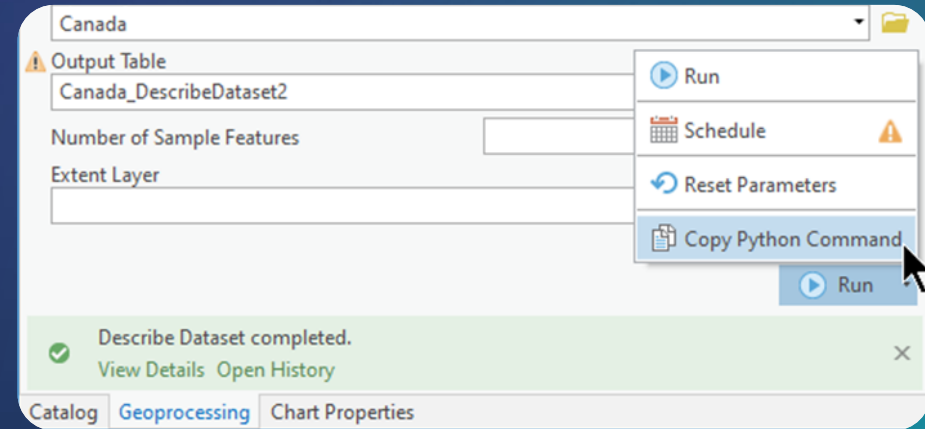
## Group Layers



## Geoprocessing Messages



## Copy Python Command



\*Requires an Advanced license

## Sign in with Browser

Sign in with Browser

Sign in automatically

Sign In Using Browser

## Find Nearby Locations\*

Find Nearby Locations

Parameters Environments

\* Input Features

\* ID Field

\* Location Points

## Favorite Business Analyst Variables\*

Data Browser

Search Variables

2016 Total Population

2016 TotHH for Income (Cur Yr)

2019 Total Pop Median Age

2019 HH Type - Total Family HHs

2019 Edu 15+ < Bachelor

2016 LFS Unemployed

2019 Total Population

## Definition Queries Filter

Contents

Search

All

Visible

Not Visible

Active definition query

Feature layer

Empty feature layer

Tiled service layer

Vector tile layer

\*Requires a Business Analyst license

# Review and Questions

- New Big Data Connection
- Geoprocessing Messages
- Copy All Details to Clipboard
- Copy Python Command
- Sign in with Browser
- Favorite Business Analyst Variables
- Find Nearby Locations
- Definition Queries Filter





## Export Layouts as Accessible PDFs

▼ Map Frame

Map Hockey

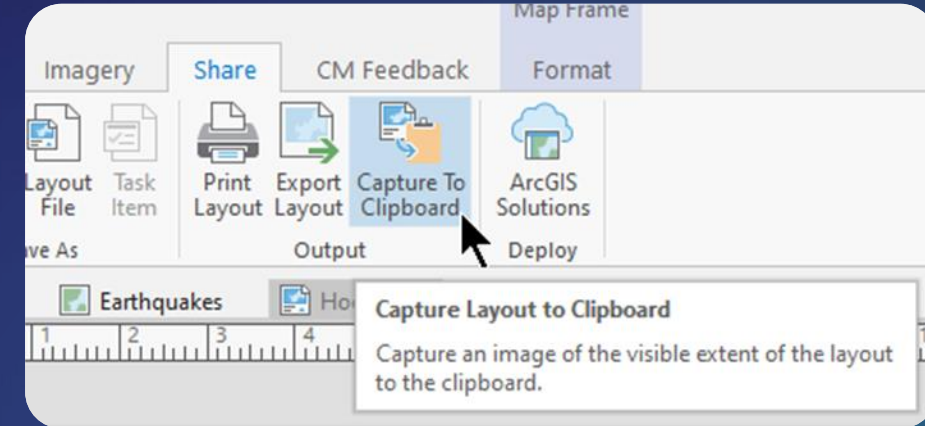
▼ Accessibility

Alt Text

Map of the continental United States of America and southern Canada showing the locations of 31 National Hockey League teams home arenas. Arenas are classified based on the four divisions implemented during the pandemic shortened season. The four divisions are Central, West, East and North.

☒ Word wrap

## Capture to Clipboard



## Layout Shortcuts

**NHL Arenas**  
2020-2021 Season

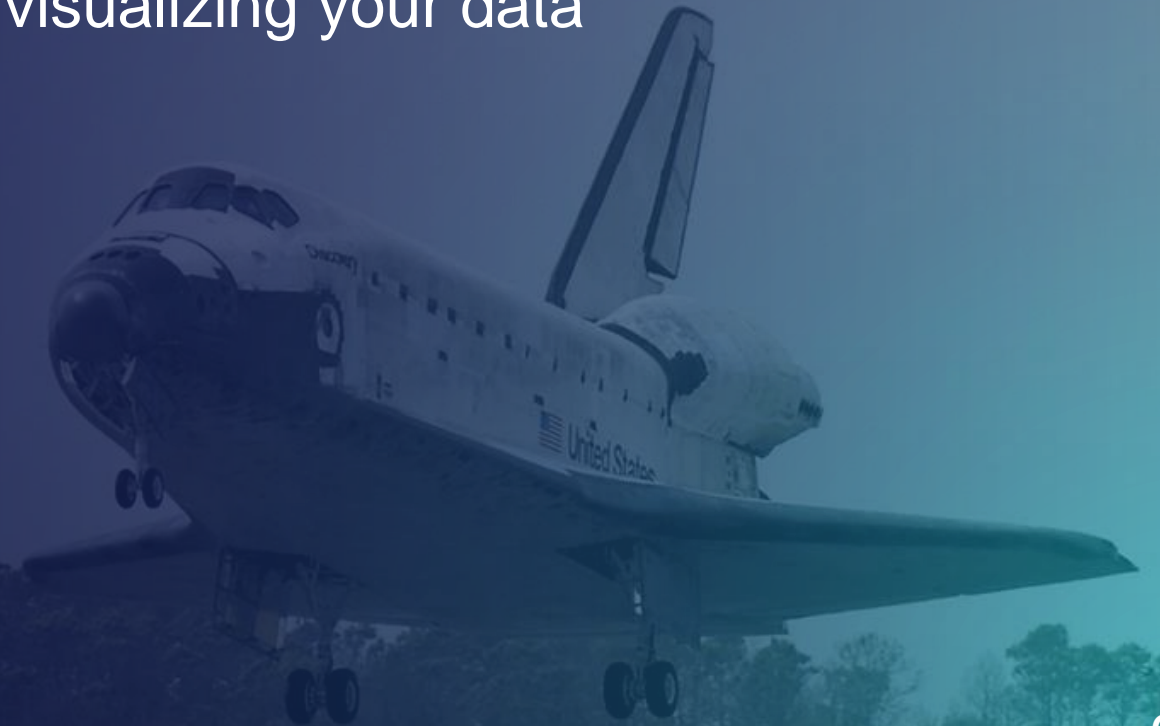
**Central**

Team	Arena
Carolina Hurricanes	PNC Arena
Chicago Blackhawks	United Center
Columbus Blue Jackets	Nationwide Arena
Dallas Stars	American Airlines Center
Detroit Red Wings	Little Caesars Arena
Florida Panthers	BB&T Center
Nashville Predators	Bridgestone Arena
Tampa Bay Lightning	Amalie Arena

# Summary

In this webinar you learned about:

1. Performance and productivity tools to get the most out of ArcGIS Pro 2.8
2. Enhanced methods for analyzing and visualizing your data
3. New tools to help your GIS workflows



# Resources

- What's New in ArcGIS 2.8 Pro Blog Post
  - [bit.ly/arccgispro28-blog](https://bit.ly/arccgispro28-blog)
- What's New in ArcGIS Pro 2.8 Documentation
  - [bit.ly/arccgispro28-doc](https://bit.ly/arccgispro28-doc)
- ArcGIS Pro 2.8 Release Notes
  - [bit.ly/arccgispro28-notes](https://bit.ly/arccgispro28-notes)

# Resources

- Upcoming webinars – [esri.ca/webinars](https://esri.ca/webinars)
  - [Esri Canada Summer School: ArcGIS Online 101](#) – July 22
  - [Esri Canada Summer School: ArcGIS Pro 101](#) – August 19
- Related training courses – [esri.ca/training](https://esri.ca/training)
  - [Creating Maps and Visualizations with ArcGIS](#)
  - [Spatial Analysis with ArcGIS Pro](#)
  - [ArcGIS Pro: Working with ModelBuilder](#)

# Thank You

- The recording will be available online at: [resources.esri.ca/webinars](https://resources.esri.ca/webinars)
- If you have any additional questions about the content presented to you, feel free to contact us:
  - Mike Gregotski – [mgregotski@esri.ca](mailto:mgregotski@esri.ca)
  - Maggie Samson – [msamson@esri.ca](mailto:msamson@esri.ca)

**Connect with us @esricanada**







© 2021 Esri Canada Limited. All rights reserved. Trademarks for Esri products are provided under license from Environmental Systems Research Institute, Inc. Other product & company names mentioned herein may be trademarks or registered trademarks of their respective owners. Errors & omissions excepted. Esri materials are copyrighted. Please request permission to use software, images or text.