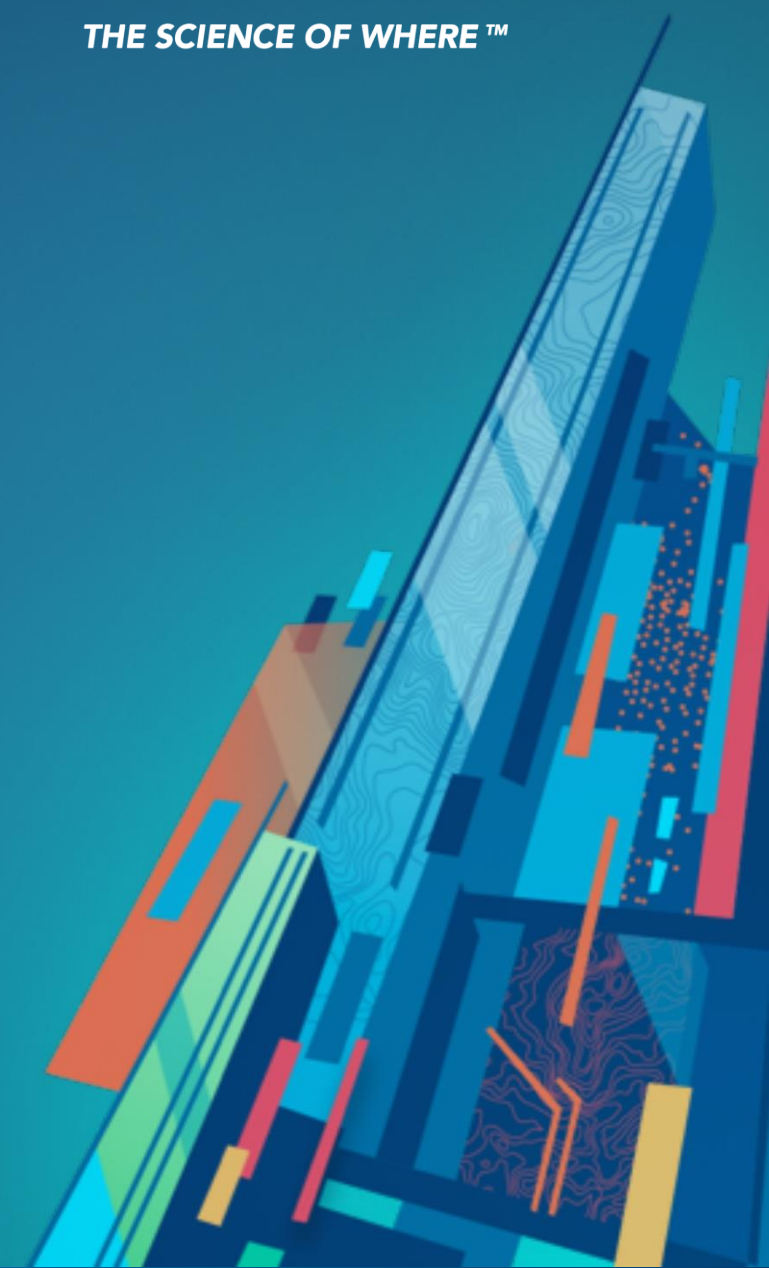


Keeping Up with ArcGIS Pro 2.6

Dylan Trerise and Mark Ho

October 8, 2020



Today's Speakers



Dylan Trerise
Associate GIS Analyst



Mark Ho
Technical Solutions Specialist

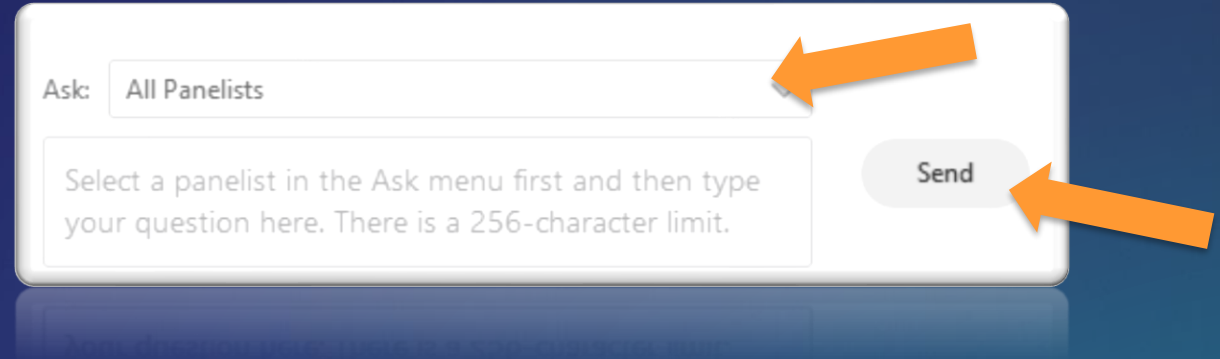


Surveys and Recordings

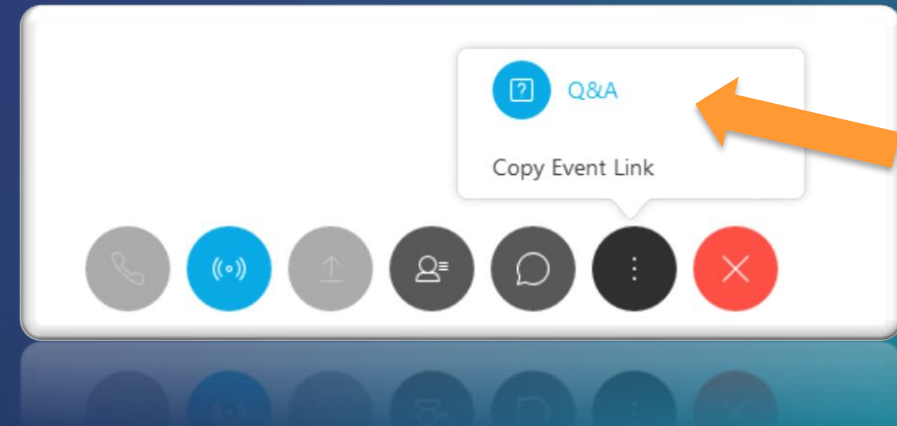
- We are recording today
- Expect an email from us with link
- Please share your thoughts on the exit survey

Open to Questions

- Please use the Q&A panel:
 - Choose *Ask: All Panelists*, type your question and click *Send*



- If you're unable to see the Q&A panel, click the three dots and then the Q&A button on the control dock at the bottom of your screen:



Today's Agenda

This webinar is designed to help you understand:

1. New data types introduced with this release, including graphic layers, voxel layers and trace networks
2. The latest advancements in data analytics, from link analysis to interactive suitability modelling
3. Other updated features to help you explore, visualize, edit, manage and share your geospatial work

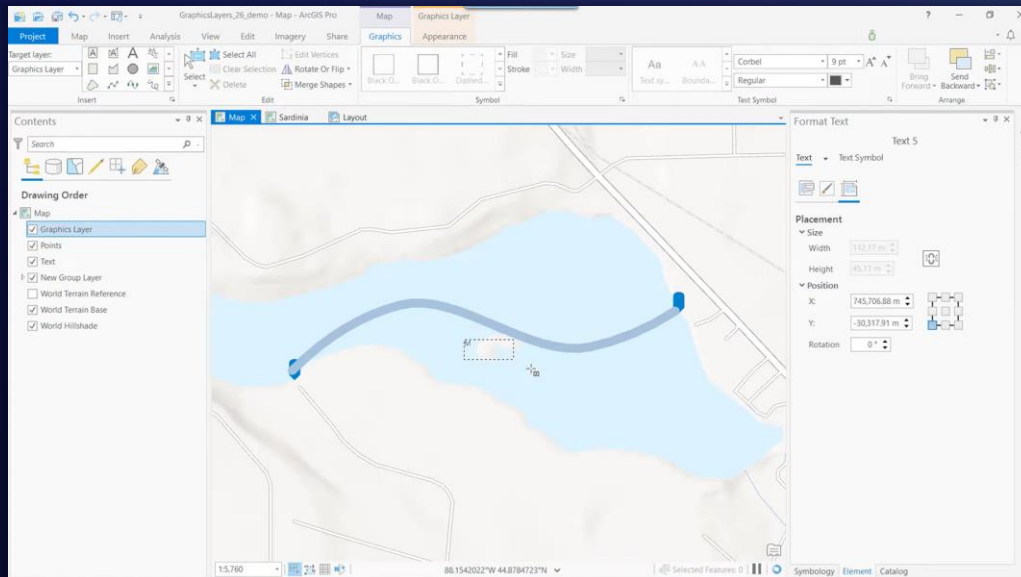


HOLLYWOOD

KEEPING UP WITH
ARCGIS PRO 2.6

Graphics Layers

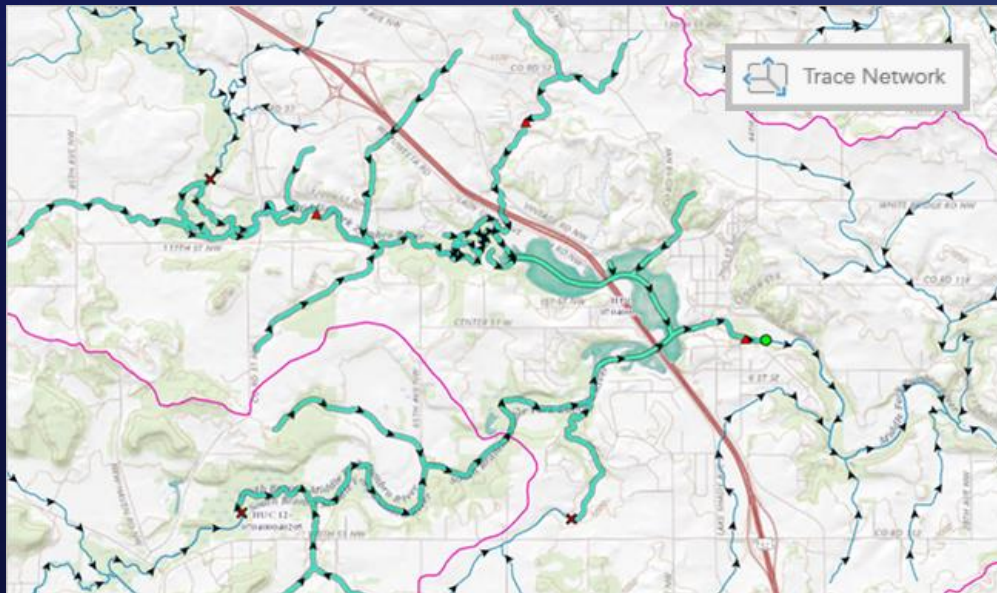
- **Add layers of shapes, text, and pictures to maps and map frames**
 - Manually add graphic elements
 - Modify existing layout elements
 - Convert feature labels into graphics
- Include multiple layers in a map
- Can be saved as layer files
- Can be shared in web maps



Trace Networks

- **Model the flow of resources through a network**

- Perform advanced analytic functions such as tracing and network diagrams
- Trace network uses a set of connected edges, junctions, or both
 - Create using existing feature classes
 - Migrate from a geometric network

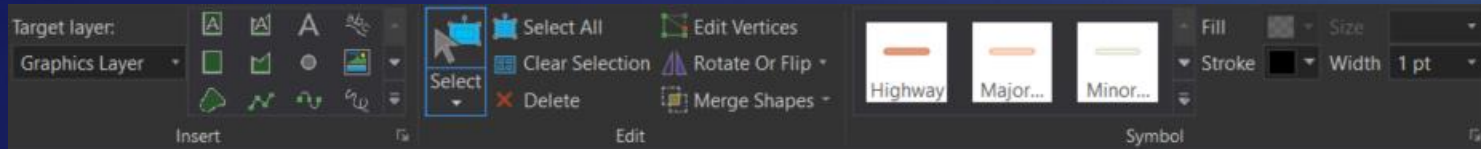


Demonstration I

- Graphics Layers
- Trace Networks

Review

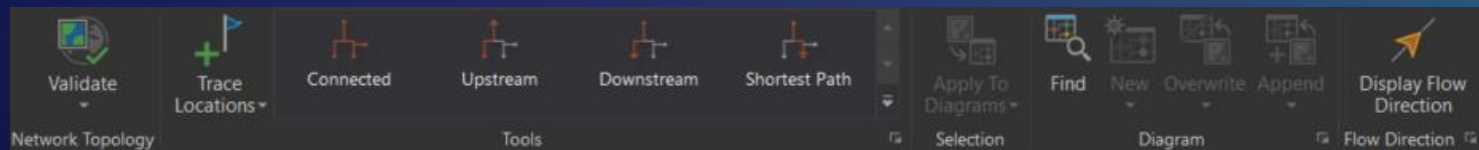
Graphics Layers



Basic
Standard
Advanced

Help

Trace Networks

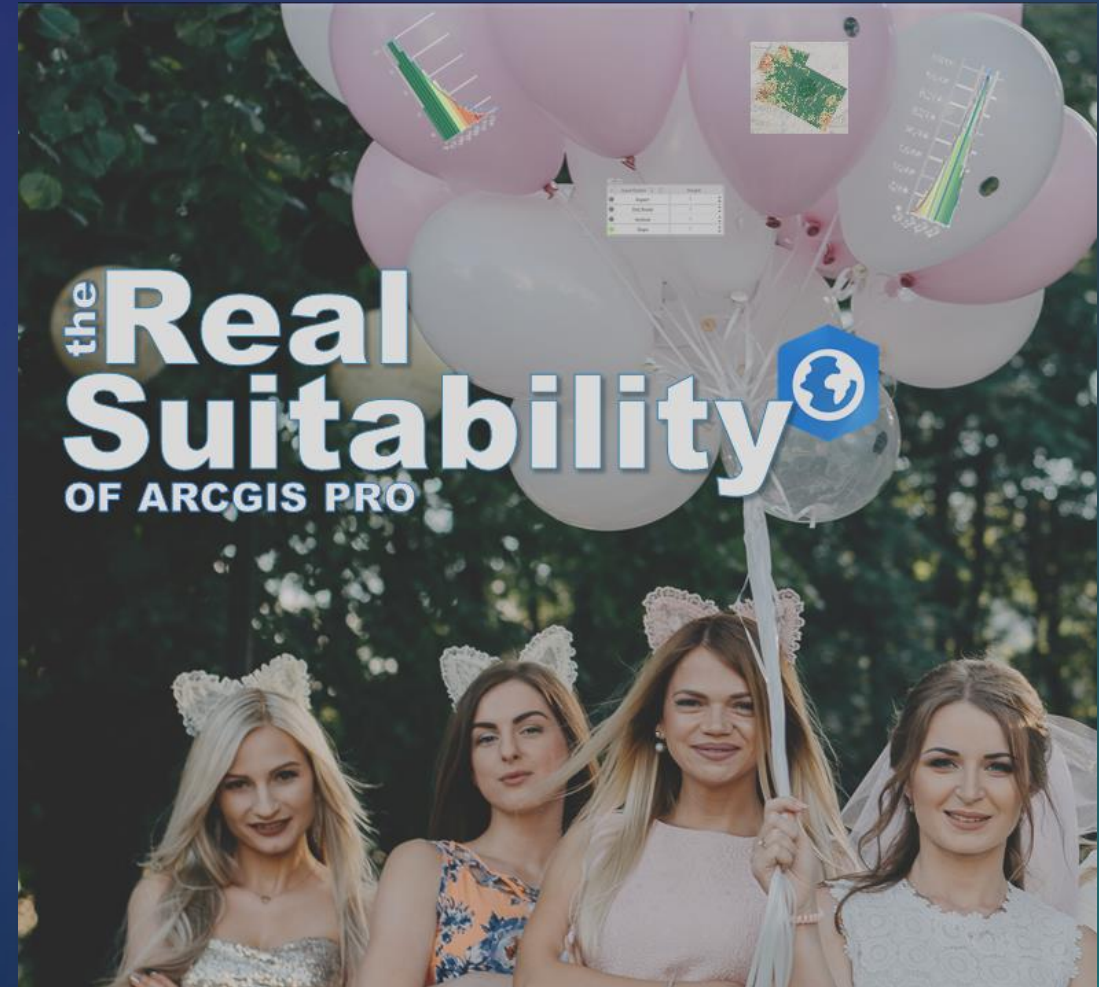
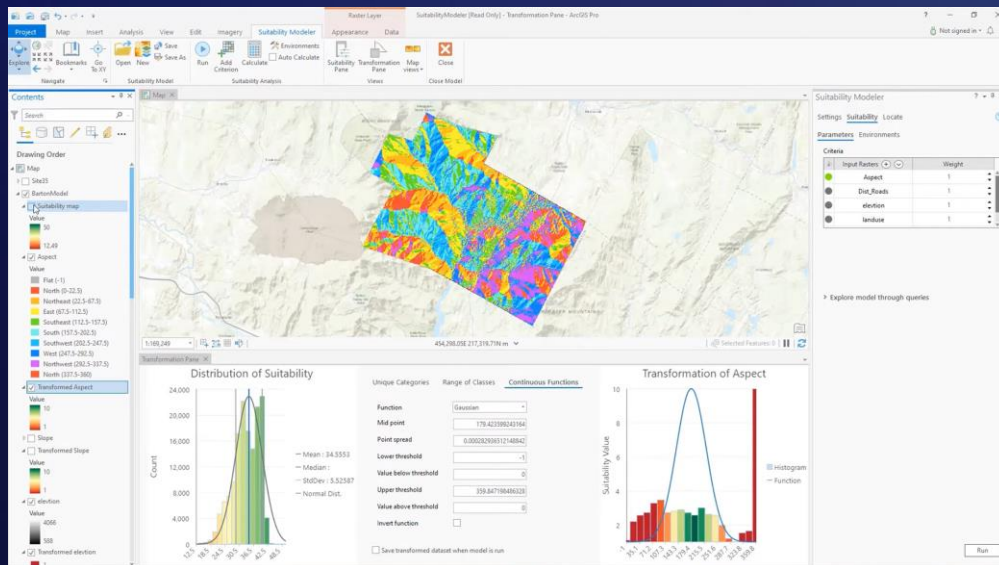


Standard
Advanced

Help

Suitability Modeler

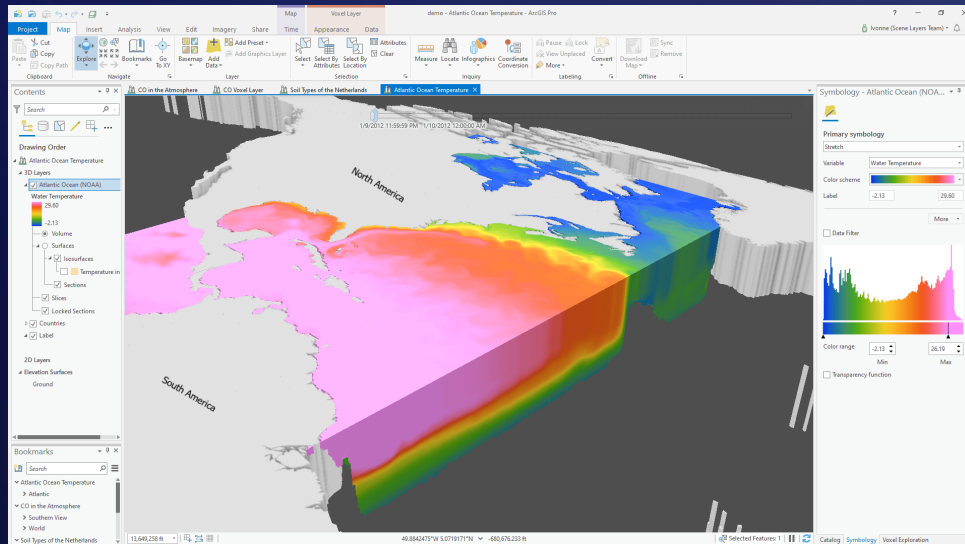
- **Interactive tools to create refined suitability models to determine best locations**
 - Dynamic and exploratory environment of interacting panes, plots, and maps
 - Transform criteria values to a common suitability scale
 - Weigh criteria to one another to create a suitability map



Voxel Layers

- **Create 3D volumetric visualizations from netCDF data**

- View complex, multidimensional data as surfaces or volumes
 - Atmospheric data
 - Oceanic data
 - Geological data
- Slice layers to create horizontal or vertical sections

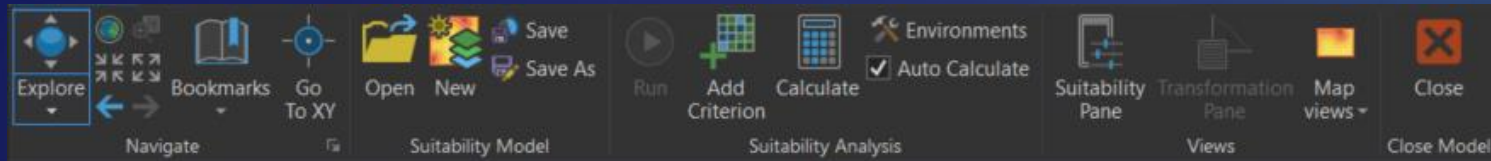


Demonstration II

- Suitability Modeler
- Voxel Layers

Review

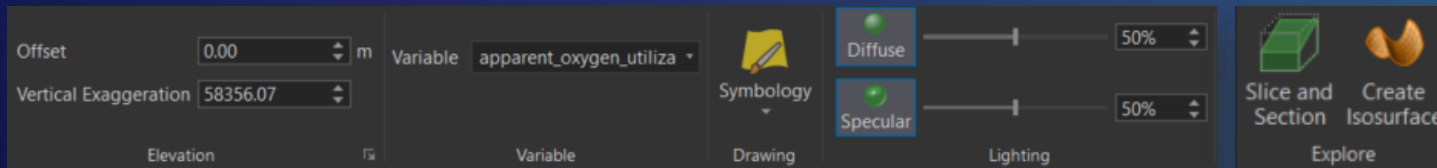
Suitability Modeler



Spatial
Analyst

Help

Voxel Layers



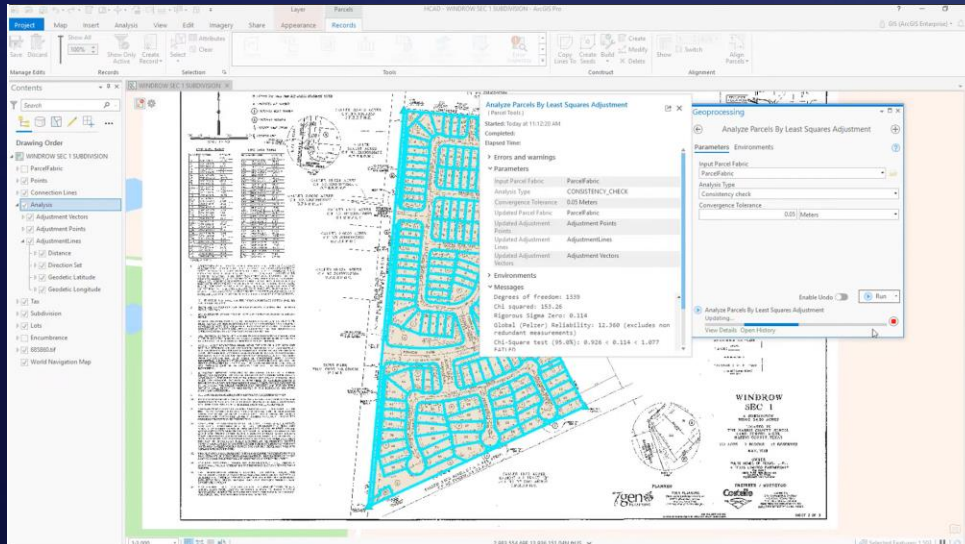
Advanced

Help

Parcel Adjustment

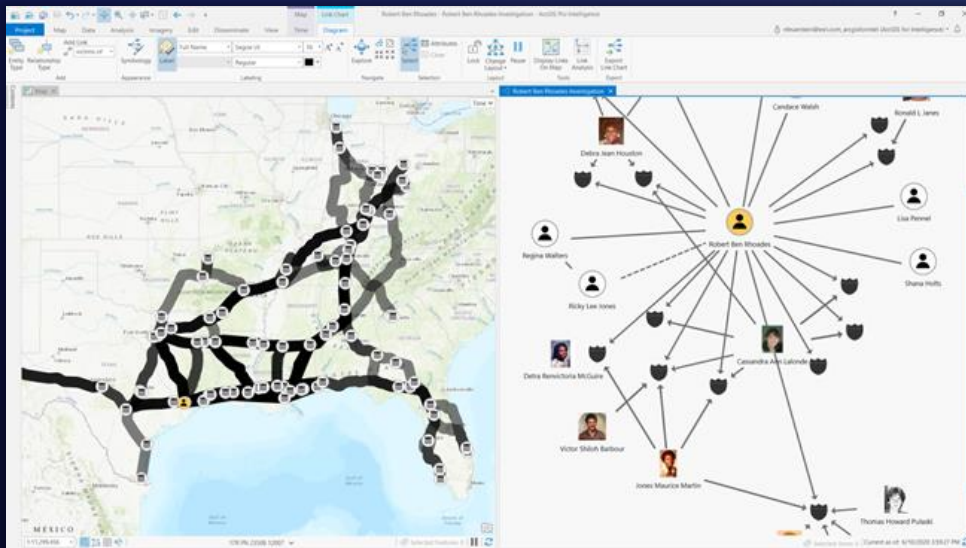
- **Parcel fabric now supports least-squares adjustments**

- Check dimensions for mistakes when entering new parcels
- Evaluate how new parcels affects the parcel fabric's spatial accuracy
- Update point coordinates and lines to be more spatially accurate



Link Analysis

- **Interactive capability to discover relationships between entities**
 - Link charts transforms feature layers to entities and relationships
 - Integrated spatial, temporal, and link analysis creates understanding for informed decisions
 - Visualize and find clusters of connected entities
 - Identify paths between entities



Demonstration III

- Parcel Adjustment
- Link Analysis

Review

Parcel Adjustment

Geoprocessing

← Analyze Parcels By Least Squares Adjustment

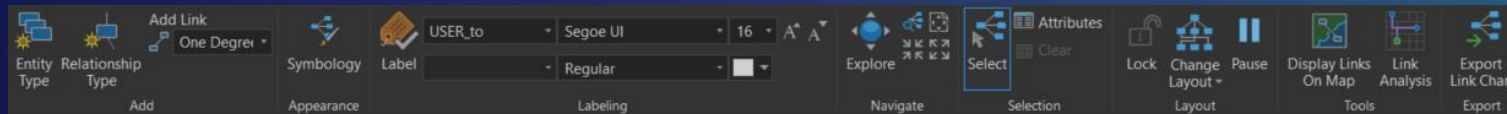
Geoprocessing

← Apply Parcel Least Squares Adjustment

Standard
Advanced

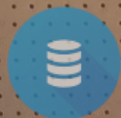
Help

Link Analysis



Basic
Standard
Advanced

Help



EXTREME MAKEOVER

ARCGIS PRO EDITION

Demonstrations IV & V

- More improvements and enhancements in ArcGIS Pro 2.6



2.7

2.8

2.9

ANTR

ARCGIS PRO'S NEXT TOP RELEASES

ArcGIS Pro Roadmap

Near-term

- Linear Reference Editing
- GPS Support
- Data Engineering
- Material Textures
- Roof Editing in Stereo
- Floor Aware Mapping and Editing
- Deep Learning for Point Clouds
- Geoprocessing Leveraging Spatial Databases
- Movement Analysis Tools
- Suitability Model Sharing
- Layer Blend Modes
- Service-Driven Workflow Manager
- Geoprocessing Credit Estimator
- Industry Foundation Classes (IFC)

Mid-term

- Knowledge Graphs
- Catalog Layers
- Projects in the Enterprise
- Voxel Layer Sharing
- Presentations
- Dynamic Feature Clustering
- Animated Symbols
- Upgrade Python Environment
- Spatio-temporal Density Analysis
- Outlier Detection
- Onboarding Experience
- Aviation Charting

Long-term

- Terrain Editing
- 3D Mesh as Ground
- High Fidelity Rendering
- Simulation Modeling

July 2020

Summary

In this webinar we:

1. Explored new data types introduced with this release, including graphic layers, voxel layers and trace networks
2. Learned about the latest advancements in data analytics, from link analysis to interactive suitability modelling
3. Showcased other updated features to help you explore, visualize, edit, manage and share your geospatial work

Resources

- Documentation

- [ArcGIS Pro Help](#)
- [What's New in ArcGIS Pro 2.6](#)

- Videos

- [What's New in ArcGIS Pro 2.6](#)
- [Ideas in ArcGIS Pro 2.6](#)
- [Esri Canada - Technical Videos](#)

- Community

- [GeoNet - ArcGIS Pro](#)
- [GeoNet - ArcGIS Ideas](#)

- Tutorials

- [Learn ArcGIS - ArcGIS Pro](#)

- Blogs

- [What's New in ArcGIS Pro 2.6](#)
- [ArcGIS Blog - ArcGIS Pro](#)
- [Ideas in ArcGIS Pro 2.6: A Large Gathering](#)
- [Esri Canada Blog](#)
 - **Coming soon: Webinar Q&A**

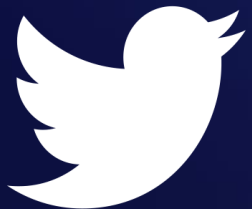
Resources

- Upcoming webinars & events
 - [Migration Planning for ArcGIS Enterprise](#) - October 15
 - [What You Need to Know About Working with 3D Voxel Data](#) - October 22
 - [Introducing ArcGIS Field Maps](#) - November 5
 - [Plan your transition to a cloud-based GIS](#) - November 10
 - [ArcGIS Pro Fantasy Draft II: Editing Tools](#) - December 10
- Virtual seminars
 - [GIS Day in Canada](#) - November 18
- Related training courses
 - [Migrating from ArcMap to ArcGIS Pro](#)
 - [Spatial Analysis with ArcGIS Pro](#)
 - [ArcGIS Pro: Working with ModelBuilder](#)

Thank You

- The recording will be available online at: resources.esri.ca/webinars
- If you have any additional questions about the content presented to you, feel free to contact us:
 - **Dylan Trerise, Associate GIS Analyst** - dtrerise@esri.ca
 - **Mark Ho, Technical Solutions Specialist** - mho@esri.ca

Connect with us @esricanada





© 2019 Esri Canada Limited. All rights reserved. Trademarks for Esri products are provided under license from Environmental Systems Research Institute, Inc. Other product & company names mentioned herein may be trademarks or registered trademarks of their respective owners. Errors & omissions excepted. Esri materials are copyrighted. Please request permission to use software, images or text.